



MAINTENANCE AND CARE INSTRUCTIONS

Olympia products are designed and engineered under strict quality standards. Regular and proper care of our products will ensure years of trouble free service. To clean, simply wipe with a damp, soft cloth. Do not use abrasive or harsh cleaners as they may result in finish damage. Regularly remove the aerator and clean any debris inside it.

OLYMPIA FAUCETS, INC. LIMITED LIFETIME WARRANTY *

Olympia Faucets, Inc. warrants its products to the original consumer purchaser to be free from defects in material and workmanship as long as the consumer purchaser owns it. Dated proof of purchase must accompany all warranty claims. PVD finishes carry a lifetime warranty in residential service.

Olympia Faucets, Inc. will replace, free of charge, to the original consumer purchaser, any and all parts that prove defective under normal installation, use, and service. Damage as a result of misuse, abuse, accident, or improper installation, will consequentially void this warranty. Replacement parts can be obtained from your local dealer or directly from Olympia Faucets. Olympia Faucets, Inc. recommends using a certified plumber for all faucet installation and repair.

This warranty is limited to replacement of defective parts only. Incidental and consequential damages, labor charges, repair, or replacement costs are expressly excluded. Some states do not allow the exclusion or limitation of incidental or consequential damages, so the above limitation may not apply to you. This warranty gives you specific legal rights, as you may have other rights of which vary from state to state.

Installation or maintenance and cleaning must be in compliance with instructions furnished with every Olympia product. If you find a problem with your product, please immediately contact your nearest Olympia Faucets, Inc. dealer or sales representative.

* 2 year limited warranty on commercial and multi-family projects.



INSTALLATION AND MAINTENANCE INSTRUCTIONS FOR OLYMPIA TWO HANDLE LAVATORY WIDESPREAD FAUCET

THIS PRODUCT MEETS THE FOLLOWING STANDARDS: ASME A112.18.1 ~ ANSI A117.1 ~ ANSI / NSF 61, SECTION 9 ~ UPC / IAPMO LISTED / ADA COMPLIANT ~ COMPLIES WITH CALIFORNIA LEAD PLUMBING LAW

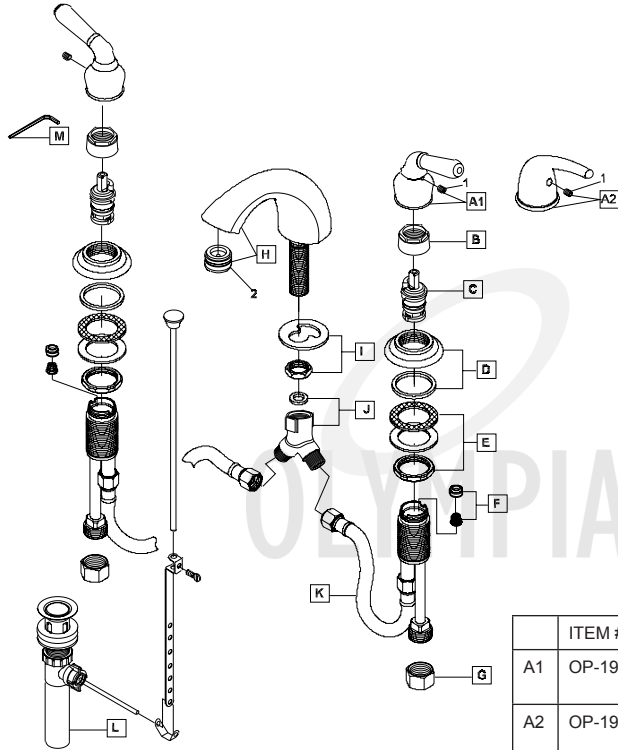
PRODUCT NUMBERS

- #L-7330** "C" Style Spout-With 50/50 Pop-Up
- #L-7332** "C" Style Spout-With Brass Pop-Up
- #L-7370** "C" Style Spout-With 50/50 Pop-Up
- #L-7372** "C" Style Spout-With Brass Pop-Up





Thank you for purchasing this quality product. Olympia products are rigorously tested to provide long service under normal conditions. Prior to installation, familiarize yourself with this parts diagram. Make sure that you have all of the illustrated parts for your Olympia product before installation.



	ITEM #	DESCRIPTION
A1	OP-190010C,H	Lever Handle Cold, Hot (For L-733X)
A2	OP-190015C,H	Lever Handle Cold, Hot (For L-737X)
B	OP-490006	Bonnet Nut
C	OP-390004	Cartridge-Brass Post
D	OP-490007	Escutcheon & Gasket
E	OP-590002	Valve Mounting Kit
F	OP-490041	Springs & Seats
G	OP-590001	Supply Nut
H	OP-230001	'C' Style Spout
I	OP-430001	Spout Mounting Kit
J	OP-490009	"Y" Connector & Washer
K	OP-490008	Flex Connector Hose
L	OP-630004 OP-630002	50/50 Pop-Up Drain Brass Pop-Up Drain
M	OP-490011	3/32" Allen Wrench
1	OP-490029	Allen Screw
2	OP-490010	1.5 GPM Aerator



For more care information or trouble shooting inquiries about your Olympia product, please call:
OLYMPIA FAUCETS, INC. (888) 772-7701
 Central Standard Time: 8:00am ~ 7:00pm
www.olympiafaucets.com

INSTALLATION INSTRUCTIONS

Tools you will need:

- Plumbers Putty
- Screwdriver
- Pipe Wrench
- Basin Wrench
- Teflon Tape
- Flexible Supply Lines
- Adjustable Wrench
- Soft Cloth

FAUCET INSTALLATION:

1. Carefully shut off both hot and cold water supplies from under the sink. Plug the sink drain with a soft cloth to prevent intrusion of debris or the loss of any faucet parts. If this installation is for a replacement, carefully remove the existing faucet and clean the entire surface of the sink mounting holes.
2. Lead spout (H) through the center hole. Slide mounting bracket (I) along the shank of the spout from underneath of the sink and use a 27/32" socket to tighten mounting nut (G). Place rubber washer (J) in 'Y' connector (J) and tighten to thread end of spout (H). CAUTION: Do not overtighten.
3. Carefully install supply valves in both remaining sink holes. Make sure both outlet hoses on the supply valves face to 'Y' connector (J). Assemble and adjust friction washer and locknut (E) so that the top of the supply valve is approximately 1-3/4" (45mm) above the mounting surface. Assemble gaskets and escutcheon (D). Use adjustable wrench to tighten.
4. Attach hot and cold (indicators "C" or "H" inside the handle hub) handles (A1 or A2) onto cartridge (C). Use 3/32" hex wrench to tighten set screws (1). CAUTION: Do not overtighten.
5. Tighten both compression nuts on hoses of supply valve to 'Y' Connector (J). Connect both hot inlet tube (LEFT INLET) and cold inlet tube (RIGHT INLET) to supply lines. NOTE: If additional adapters or supply lines are required, they may be purchased from the same location where this faucet was purchased. Use with teflon tape when attaching faucet to supply lines.
6. Use sealant to caulk around spout (H).

POP-UP DRAIN ASSEMBLY INSTALLATION:

1. Thread mounting nut and bottom gasket of the pop-up drain assembly (K) onto the drain body. Wrap bottom threaded end of the flange with teflon tape and place adequate amount of plumbers putty around the underside of flange.
2. Gently slip the drain body up through the drain opening. Screw flange onto drain body, holding the drain body in position with the pivot rod opening facing the back of the sink. Tighten the mounting nut securely with a wrench.
3. Place pivot rod in pivot rod opening. Slide pivot nut over pivot rod and thread it onto the drain body. Hand tightens until it is snug. CAUTION: Be careful not to overtighten.
4. With the lift rod in position on the faucet lift rod hole, lift the rod through the lift rod strap and secure with the set screw.
5. Guide the pivot rod through one of the holes on the lift rod strap and secure it with the spring clip, then adjust the height of the lift rod by resetting the set screw.

FINAL PRODUCT INSTALLATION:

1. Turn on the hot and cold water supplies. Check all around for any minor joint leaks. NOTE: Inspect for any leaks around the connections to the supply lines.
2. Remove aerator (2) from end of spout (H). Turn on both sides of handles to flush both water lines allowing water to run through for one minute. Replace aerator (2).

CAUTION: MAKE SURE TO TIGHTEN THE AERATOR SECURELY AFTER FLUSHING THE WATER LINES TO PREVENT FROM FUTURE WATER SEEPAGE.